

Polyamide PA 2200

Material for the SLS process

ogle
models+prototypes

+44 (0)1462 682 661

www.oglemodels.com

Technical Data Sheet

Features, benefits and applications

- Non-porous, so eliminating the need to seal the surface in components used with liquids
- Increased flexibility in the design and development process
- For a more attractive and smoother surface texture, use Ogle's Vibro finishing service



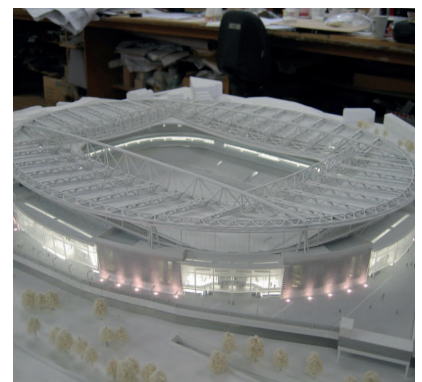
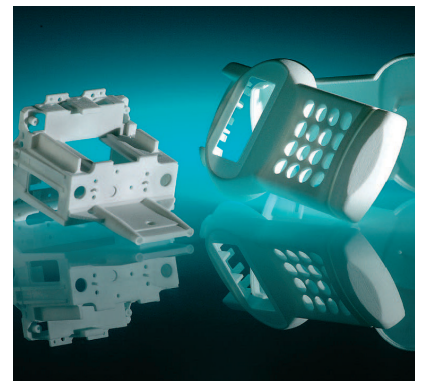
Machines

- Available on P100, P385 & P730 SLS machines

General Material Properties		
Measurement	Condition	Value
Density of Laser Sintered Part	EOS-Method	0.9-0.95g/cm ³

Mechanical Properties		
Measurement	Condition	Value
Tensile Modulus	DIN EN ISO 527	1700 ±150 MPa
Tensile Strength	DIN EN ISO 527	45 ±3MPa
Elongation at Break	DIN EN ISO 527	20 ±5%
Flexural Modulus	DIN EN ISO 178	1500 ±130 MPa
Impact Strength (Charpy)	DIN EN ISO 179	53 kJ/m ²
Notched Impact Strength (Charpy)	DIN EN ISO 179	4.8 kJ/m ²
Impact Strength (Izod)	DIN EN ISO 180	32.8 kJ/m ²
Notched Impact Strength (Izod)	DIN EN ISO 180	4.4 kJ/m ²
Hardness, Shore D	DIN 53505	75

Thermal Properties		
Measurement	Condition	Value
Glass Transition (TG)	-	+130°C



Please be advised that all information provided in this document is representative of typical properties and as advised by the material manufacturer. The performance characteristics of these products may vary according to product application, operating conditions, or with end use. Ogle Models + Prototypes Ltd makes no warranties of any type, express or implied, including, but not limited to, the warranties of merchantability or fitness for a particular use. Specifications subject to change without notice.