

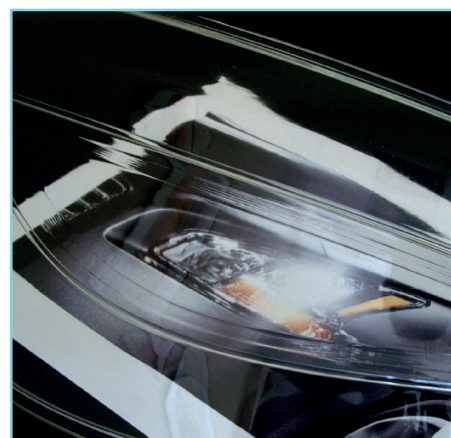
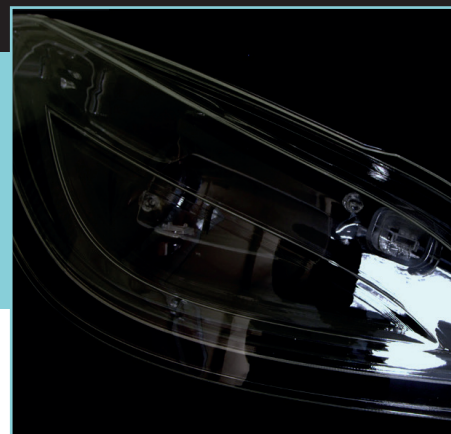
Technical Data Sheet

Features, benefits and applications

- Transparent assemblies including headlamps and bottles
- Rigid & tough
- Excellent humidity/moisture resistance
- Capable of meeting UPS Class VI

Machines

- Available on iPro 8000 and Viper SLA machines



Post-Cured Material			
Measurement	Condition	Metric	U.S.
Tensile Strength (MPa/PSI)	ASTM D 638	41 - 46	5950-6670
Tensile Modulus (MPa/KSI)	ASTM D 638	2030-2220	294-322
Elongation at Break	ASTM D 638	4 - 7%	4 - 6%
Flexural Strength (MPa/PSI)	ASTM D 790	53-67	7690-9720
Flexural Modulus (MPa/KSI)	ASTM D 790	1560-2040	226-296
Impact Strength (J/m /Ft-lbs/in)	ASTM D 256	43-67	0.81-1.26
Heat Deflection Temperature	ASTM D 648		
	@ 66 PSI	46°C	115°F
	@ 264 PSI	41°C	106°F
Coefficient of Thermal Expansion (CTE)	ASTM E 831-93		
	< 35 °C	70	70
	> 60 °C	160	160
Glass Transition (Tg)	DMA, E''	56°C	133°F
Shore D	-	84	84

Liquid Material		
Measurement	Condition	Metric
Viscosity	@ 30°C (86°F)	235-260cps
Penetration Depth (Dp)	-	4.1mils
Critical Exposure (Ec)	-	9.5mJ/cm ²
Colour	-	Clear
Solid Density	@ 25°C (77°F)	1.17g/cm ³
Liquid Density	@ 28°C (82°F)	1.10g/cm ³

Please be advised that all information provided in this document is representative of typical properties and as advised by the material manufacturer. The performance characteristics of these products may vary according to product application, operating conditions, or with end use. Ogle Models & Prototypes Ltd makes no warranties of any type, express or implied, including, but not limited to, the warranties of merchantability or fitness for a particular use. Specifications subject to change without notice.

Got a question? Need more technical data?

Call Us: +44 (0) 1462 682 661 | Email Us: info@oglemodels.com

Visit: www.oglemodels.com