

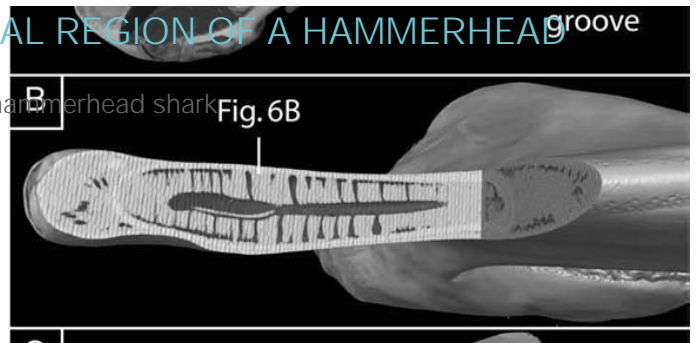
FUNCTIONAL MORPHOLOGY OF THE NASAL REGION OF A HAMMERHEAD SHARK

PROJECT: Functional morphology of the nasal region of a hammerhead shark

CLIENT: Abeletal

DATE: 14 April 2010

DURATION:



PROJECT DETAILS

Ogle Models and Prototypes Ltd are proud to have been involved in a project to investigate the interesting physiology of the Hammerhead Shark. The project involved many UK university department and the Natural History Museum.

Ogle's model making expertise was utilised to produce a model of the nasal area of a Hammerhead Shark from 3D CAD data for researchers to use in experiments.

Ogle Models and Prototypes Ltd skills are not just limited to the research and medical industries but are important to defence, automotive and aerospace industries.

CALL OGLE NOW ON:

+44 (0) 1462 682661